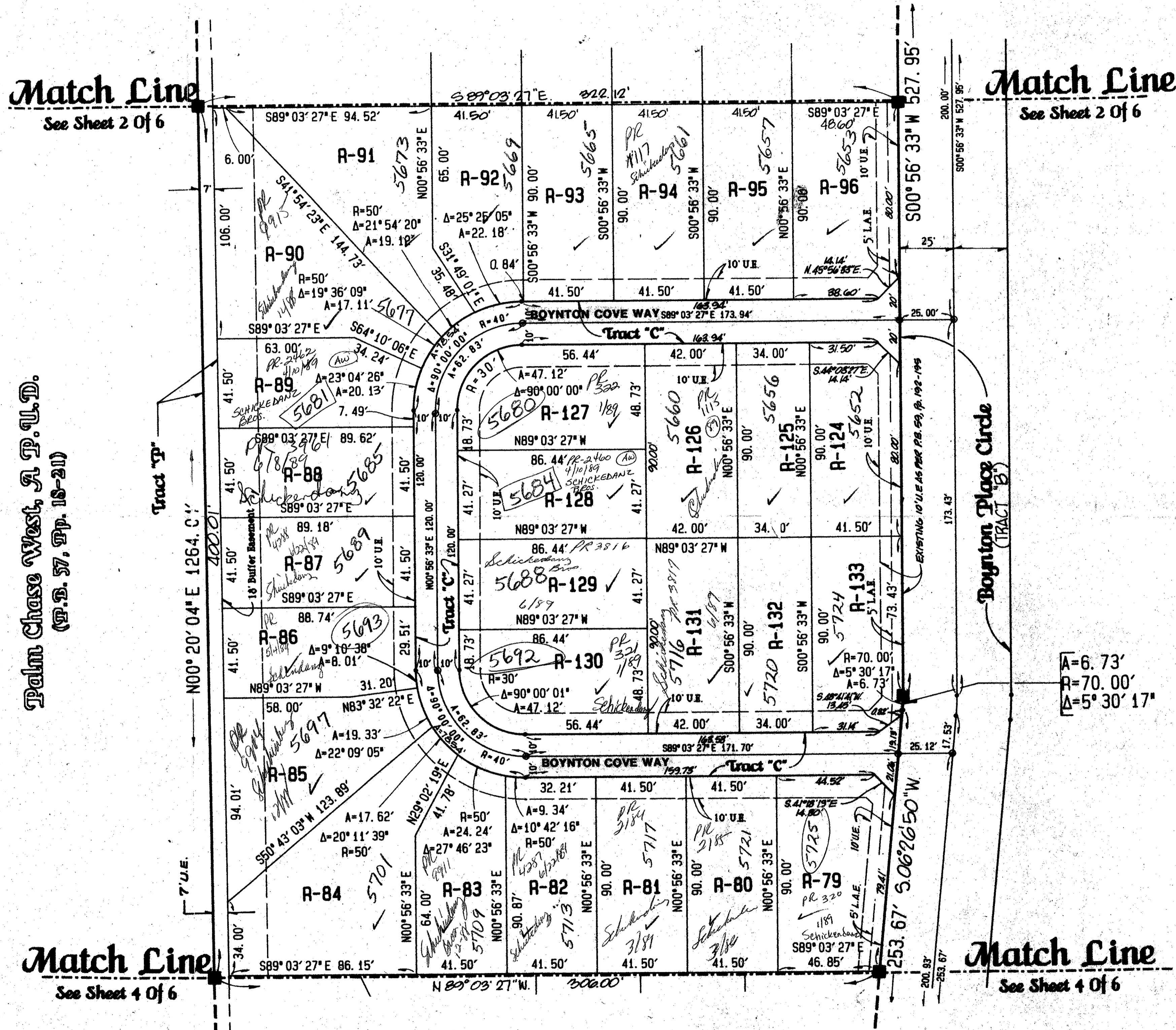
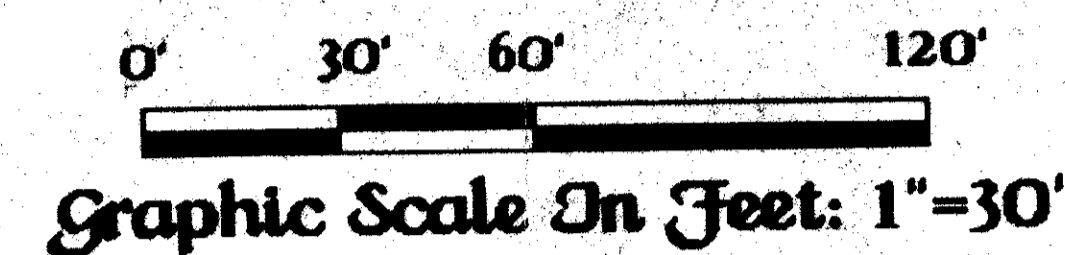
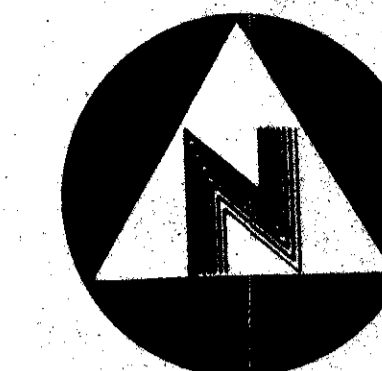
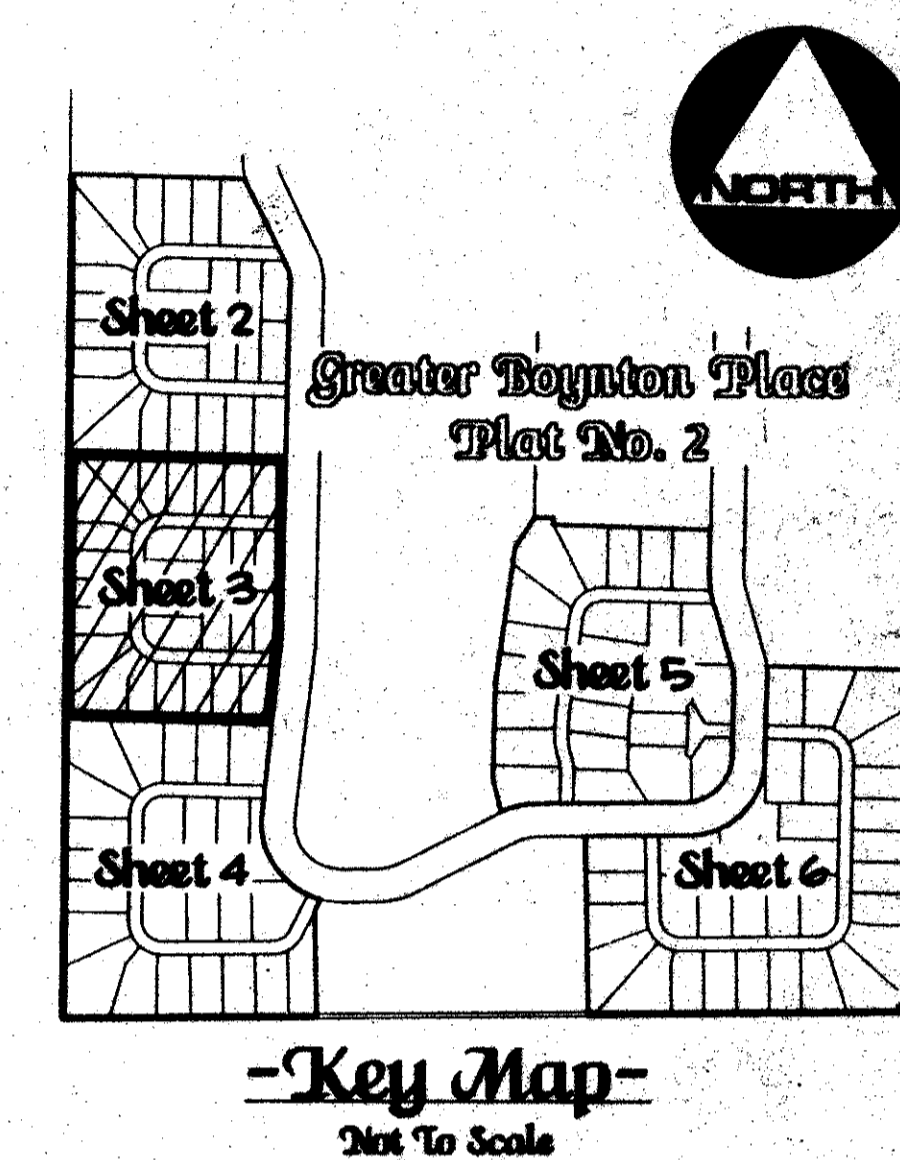


# - Greater Boynton Place Plat No. 3 -

State Of Florida )  
 County Of Palm Beach )  
 This Plat was filed for record at  
 this day of \_\_\_\_\_  
 A.D., 1988, and duly recorded  
 in Plat Book \_\_\_\_\_ on  
 Pages \_\_\_\_\_ through \_\_\_\_\_  
 John B. Dunkle,  
 Clerk of the Circuit Court.  
 By: \_\_\_\_\_ Deputy Clerk



Greater Boynton Place Plat No. 2  
 (P.D. 59, pp. 192-193)



Palm Chase West, A.P.U.D.  
 (P.D. 57, pp. 16-21)

SUBDIVISION: Greater Boynton Place  
 BOOK: 192 PAGE: 192  
 PLATT: BOYNTON PLACE MAP # 192  
 QUA: 533  
 SE  
 PUB: 1988  
 CODE: 30496  
 2645192

Note:  
 Lot lines and/or boundary lines which intersect a curve are not  
 radial to said curve unless otherwise noted.

*San Valley & Post  
 3-30-88 85-162*

*0498-006  
 85-162*

*60/192*

This instrument was prepared by Wm. R. Van Campen, R.L.S., and for the offices of Bench Mark Land Surveying & Mapping, Inc., 4152 W. Blue Heron Boulevard, Suite 121, Riviera Beach, FL.

- Legend:
- Indicate A Permanent Reference Monument \* 2424 (P.R.M.)
  - Indicate A Permanent Control Point \* 2424 (P.C.P.)
  - D.E. Indicate A Drainage Easement
  - U.E. Indicate A Utility Easement
  - L.M.E. Indicate A Lake Maintenance Easement

BENCH MARK  
 LAND SURVEYING & MAPPING, INC.  
 4152 W. BLUE HERON BOULEVARD, SUITE 121, RIVIERA BEACH, FL.

Record Plat  
 Greater Boynton Place  
 Plat No. 3

DATE	BY	REVISION	NO.